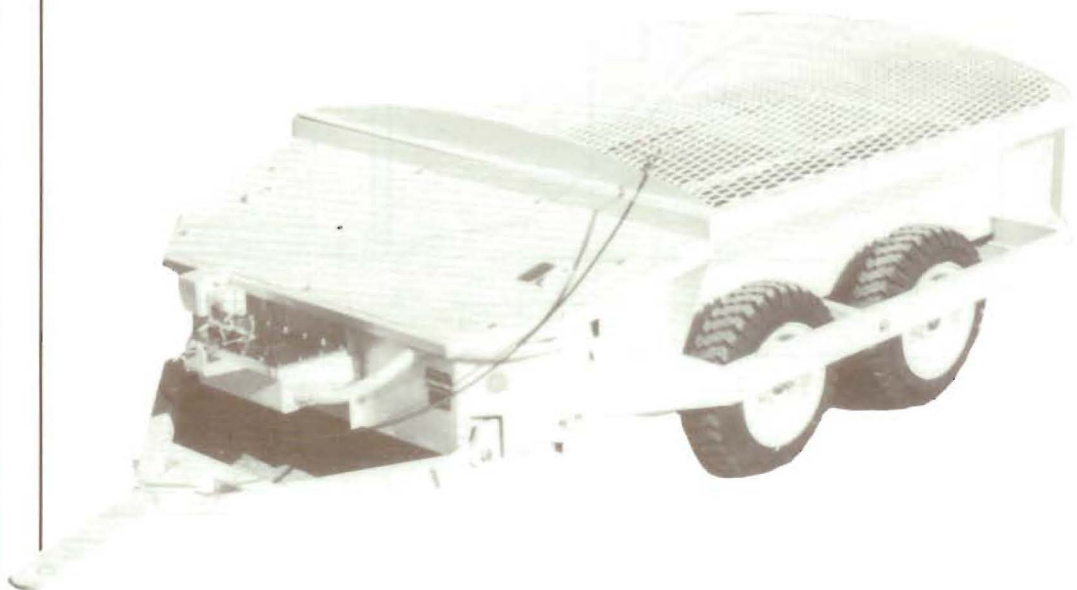


JOHN B. LONG CO.

ROCK DUSTER

MODEL MD-5 ROCK DUSTER



(MD-5D Illustrated)

PROFIT IMPROVEMENT/COST REDUCTION

The **MD-5** rock duster is a patented labor savor savings device which was developed to improve profits while reducing mine costs. Simplicity, no blower, and the maintenance oriented design have resulted in 98% plus machine availability with performance guaranteed by the self-contained battery. Rib to rib one pass cover-

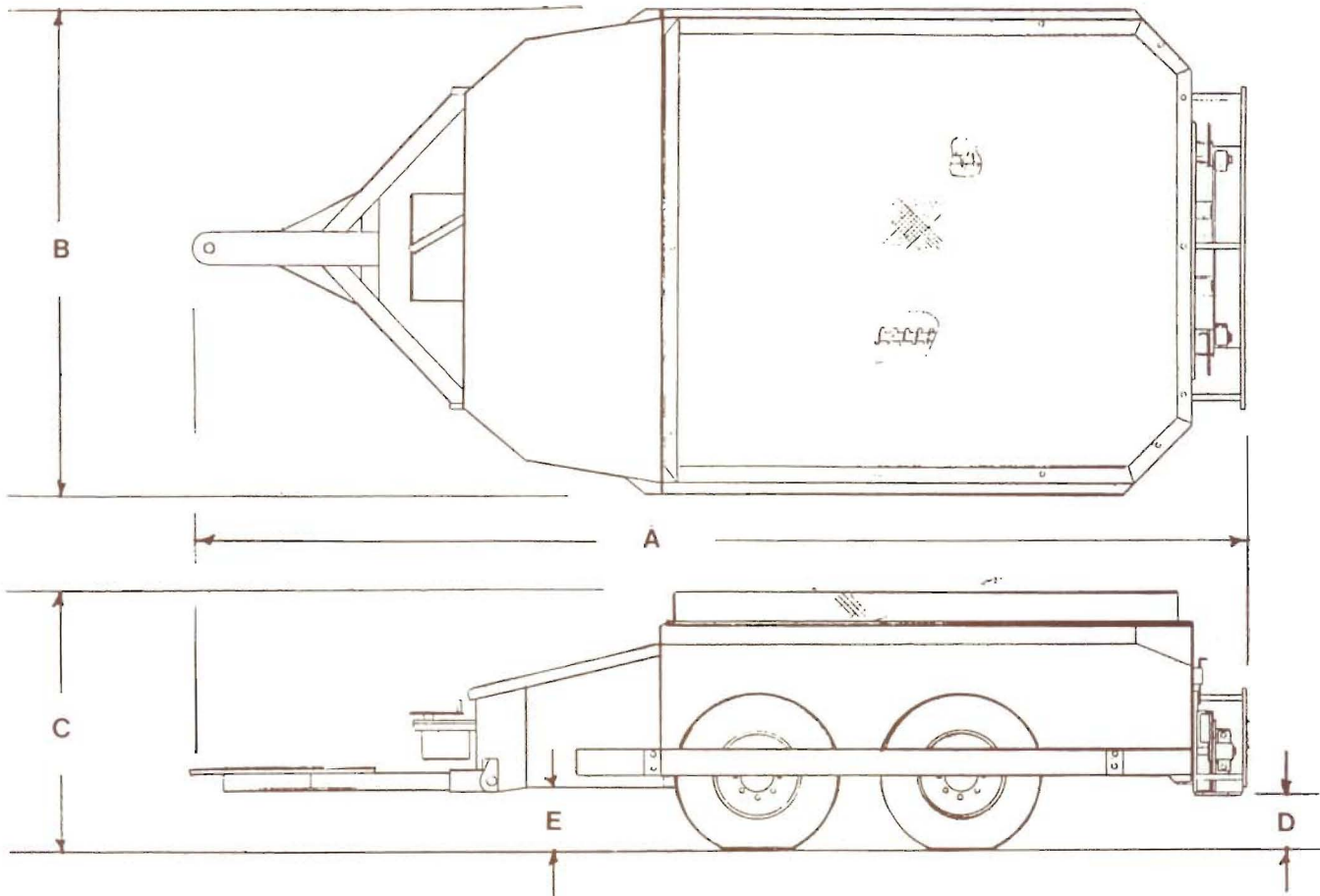
age by one man with up to 1000' of entry in two minutes is routinely practiced in low seam mines. Perfected in three to ten foot seam heights from input by miners who use them daily.

Three heavier models available with hopper capacities up to 5.0 tons. (See specifications on the back of this sheet)

RIB TO RIB ONE PASS COVERAGE, BY ONE MAN

JOHN B. LONG CO.

Model MD-5 Rock Duster Dimensions and Specifications



Mechanical:

- A - Length = 15'-10"
- B - Width = 7'-0"
- C - Height = See Schedule
- D - Ground Clearance = 6"
- E - Ground Clearance Under Body = 9"
- Weight - See Schedule
- Hopper Capacity - See Schedule
- Tires - 7.00-15, 2 Ply

Electrical:

- Motor - 10 HP, 72 VDC, Series traction-type MSHA SX-TENV
- Starter - 72 V, single speed, 2-step
- Batteries - High density, electric vehicle EV type, 72V, (12, 6V), 220 AH integrally mounted.
- Charger - Model 7240 "Opportunity" Charger supplied with duster, 480/600 VAC or 240/480 VAC, single phase input, automatic control, skid mounted, drip-proof enclosure.

Model	C-Height	Weight	Hopper Capacity
MD-5B	33"	4800#	2.35 tons
MD-5C	41"	4875#	4.0 tons
MD-5D	47"	5000#	5.0 tons

NOTE: Lower model MD-4 available with C dimension of 23"; see separate spec sheet.

JBL Co.

1504 PROCTOR STREET
 P.O. BOX 50608
 KNOXVILLE, TN 37950
 615/522-8686