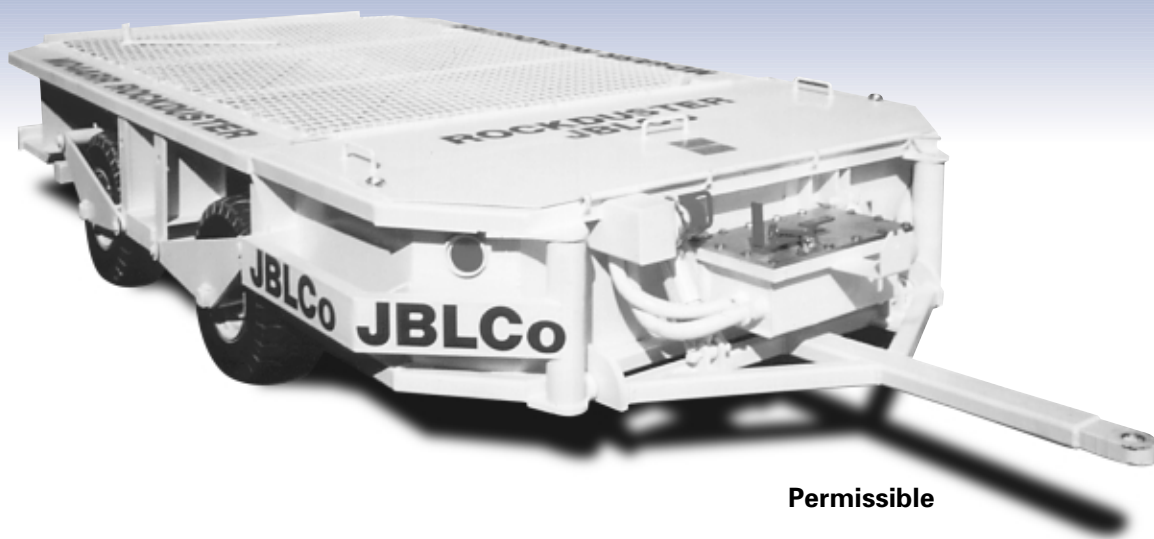


# Rubber/Rail Rock Duster

## Model MD-4 R/R Rubber/Rail



Permissible

### ONE MAN - ONE PASS - RIB TO RIB COVERAGE

**John B. Long Co's MD-4 Rubber/Rail Rock Duster** has the unique ability to shift from rail mode to rubber tire mode quickly. One man, one pass, rib to rib coverage with up to 1000 feet of entry in two minutes is appreciated most by mines with miles of track to maintain. The MD-4R/R Rock Duster is versatile and adapts easily to meet the changing needs within the mines. The 10 inch standard mine supply car wheels are adaptable to actual track gauge (customer to specify). The rear axle is trunnion mounted. Optional central front and rear greasing stations offer simple maintenance. The rubber tires are cradle mounted making them easier to raise or lower when the rock duster is on mine rails. The MD-4R/R improves profits while reducing mine costs. The simple, no blower, design has resulted in 98% plus machine availability. Less maintenance by the self contained battery guarantees high performance.

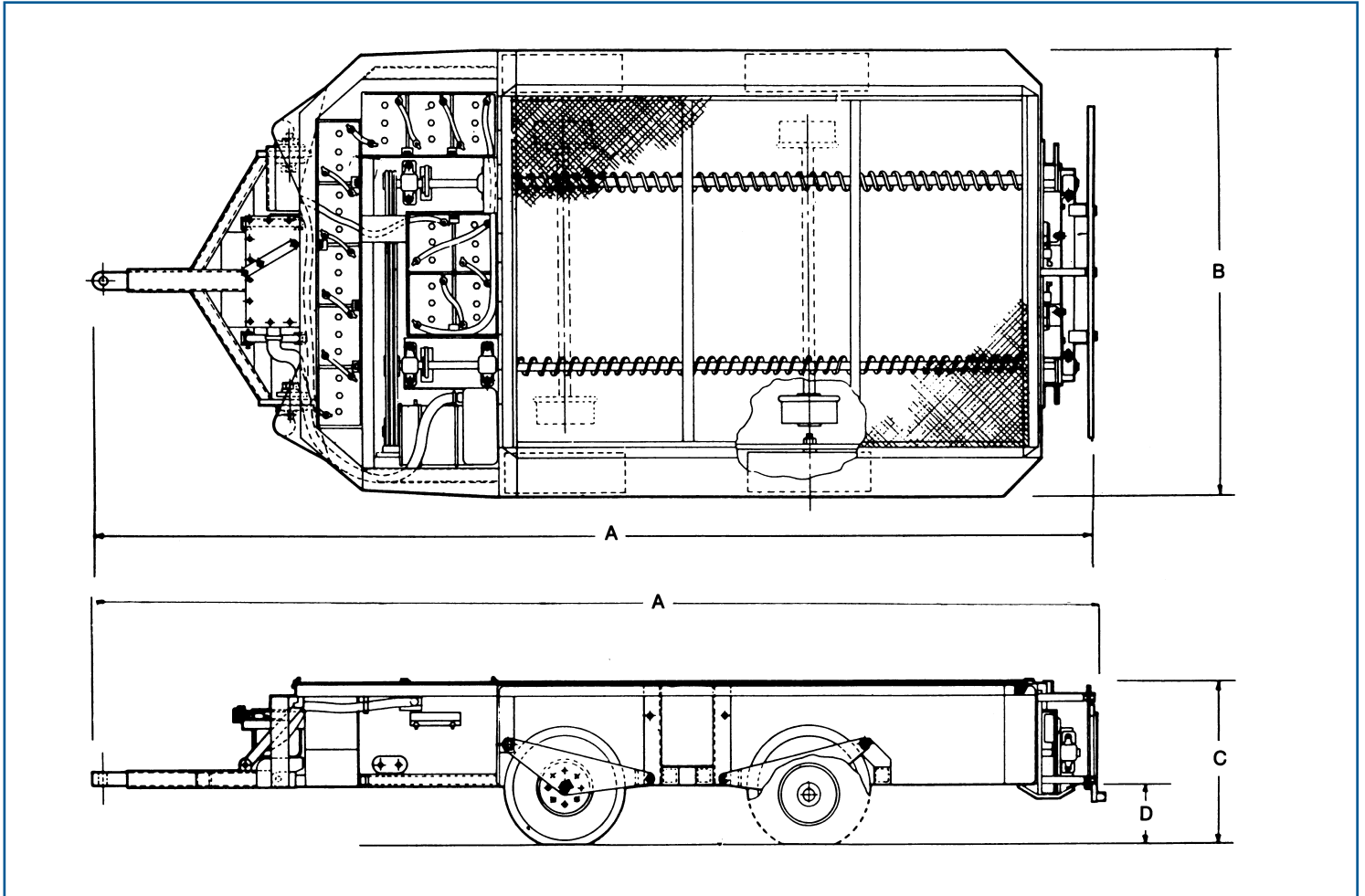
*MSHA Approved  
Permissible Vehicles*

*JBLCo Provides  
Profit Improvement/Cost Reduction*

John B. Long Co P.O. Box 50608 Knoxville, Tennessee 37950-0608 U.S.A.  
Phone (865) 522-8686 Fax (865) 523-4996  
Website: <http://www.jblco.com> Email: [sales@jblco.com](mailto:sales@jblco.com)  
Engineered and Manufactured in the U.S.A.

# JBLCo

# Rock Duster Model MD-4 R/R Rubber/Rail Dimensions and Specifications



## Mechanical:

A - Length = 15' 2"

B - Width = 6' 6"

C - Height

MD-4 R/R Rail Mode = 2' 0"

MD-4 R/R Rubber Tire = 2' 4"

D - Ground Clearance

MD-4 R/R Rail Mode = 6"

MD-4 R/R Rubber Tire = 10"

Weight: MD-4 R/R = 4,100 lbs.

Hopper Capacity = 1.25 tons

Tires = 6.90 x 9, 8-ply

## Electrical:

Motor: 10 HP, 72 VDC, Series traction type MSHA XP-TENV

Starter: 72 V, single speed, 2-step

Batteries: High density, electric vehicle EV type, 72V, (12, 6V), 235 AH integrally mounted

Charger: Charger supplied with duster, 480/575 VAC or 240/480 VAC, single phase input, control timer

**Options:** Central Greasing Station

NOTE: Larger MD-5 with dust capacity up to 5.0 tons available, ask for pricing and availability.

JOHN B. LONG Co P.O. Box 50608 Knoxville, Tennessee 37950-0608 U.S.A.

Phone (865) 522-8686 Fax (865) 523-4996

Website: <http://www.jblco.com> Email: [sales@jblco.com](mailto:sales@jblco.com)

Holder of multiple U.S. and Foreign Patents • Engineered and Manufactured in the U.S.A.