

# Rock Duster

## Model MD-4A Rock Duster



Permissible

### ONE MAN - ONE PASS - RIB TO RIB COVERAGE

**John B. Long Co's MD-4A Rock Duster** is a patented labor savings machine developed to improve profits while reducing mine costs. The simple, no blower design results in 98% plus machine availability. Less maintenance by the self-contained battery guarantees high performance. The MD-4A Rock Duster is versatile and adapts easily to changing needs within the mines. One man, one pass, rib to rib coverage, with up to 1000 feet of entry in two minutes, is a routine practice in low seam mines. Machine design allows operation in three to ten feet seam heights. Optional central front and rear greasing stations offer simple maintenance.

*MSHA Approved  
Permissible Vehicles*

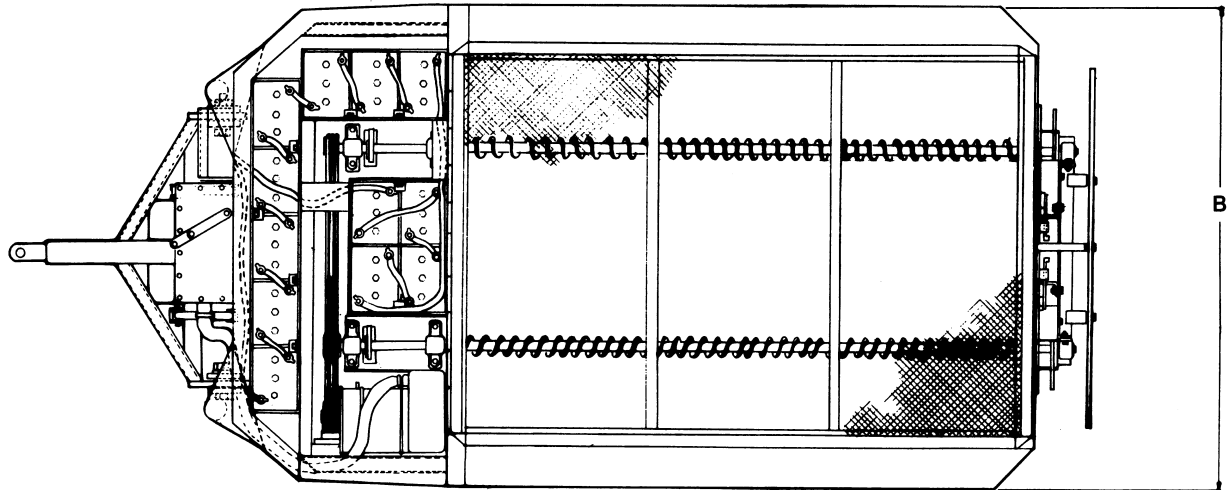
*JBLCo Provides  
Profit Improvement/Cost Reduction*

---

John B. Long Co P.O. Box 50608 Knoxville, Tennessee 37950-0608 U.S.A.  
Phone (865) 522-8686 Fax (865) 523-4996  
Website: <http://www.jblco.com> Email: [sales@jblco.com](mailto:sales@jblco.com)  
Engineered and Manufactured in the U.S.A.

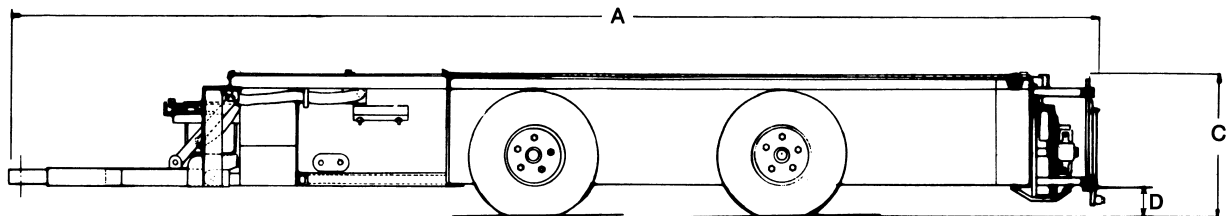
# Rock Duster Model MD-4A

## Dimensions and Specifications



### MODEL MD-4, MD-4A\* and MD-4AA\*

MD-4, Models AA & A are identical except positioning of wheel and axle assemblies optional frame attachment locations (can be field interchanged).



#### Mechanical:

A - Length = 15' 2"

B - Width = 6' 6"

C - Height

MD-4AA = 1' 2", MD-4A = 1' 11"

D - Ground Clearance = 7.5"

MD-4AA = 0' 5", MD-4A = 0' 8"

Weight: MD-4 = 3,400 lbs.

Hopper Capacity = 1.25 tons

Tires = 6.90 x 9, 8-ply

#### Electrical:

Motor: 10 HP, 72 VDC, Series traction type MSHA XP-TENV

Starter: 72 V, single speed, 2-step

Batteries: High density, electric vehicle EV type, 72V, (12, 6V), 235 AH integrally mounted

Charger: Charger supplied with duster, 480/575 VAC or 240/480 VAC, single phase input, control timer

Options: Central Greasing Station

NOTE: Larger MD-5 with dust capacity up to 5.0 tons available, ask for pricing and availability.

Control Cables available in different lengths to adapt to towing vehicle.

JOHN B. LONG Co P.O. Box 50608 Knoxville, Tennessee 37950-0608 U.S.A.

Phone (865) 522-8686 Fax (865) 523-4996

Website: <http://www.jblco.com> Email: [sales@jblco.com](mailto:sales@jblco.com)

Holder of multiple U.S. and Foreign Patents • Engineered and Manufactured in the U.S.A.