

Model 372 Permissible Mantrip Vehicle



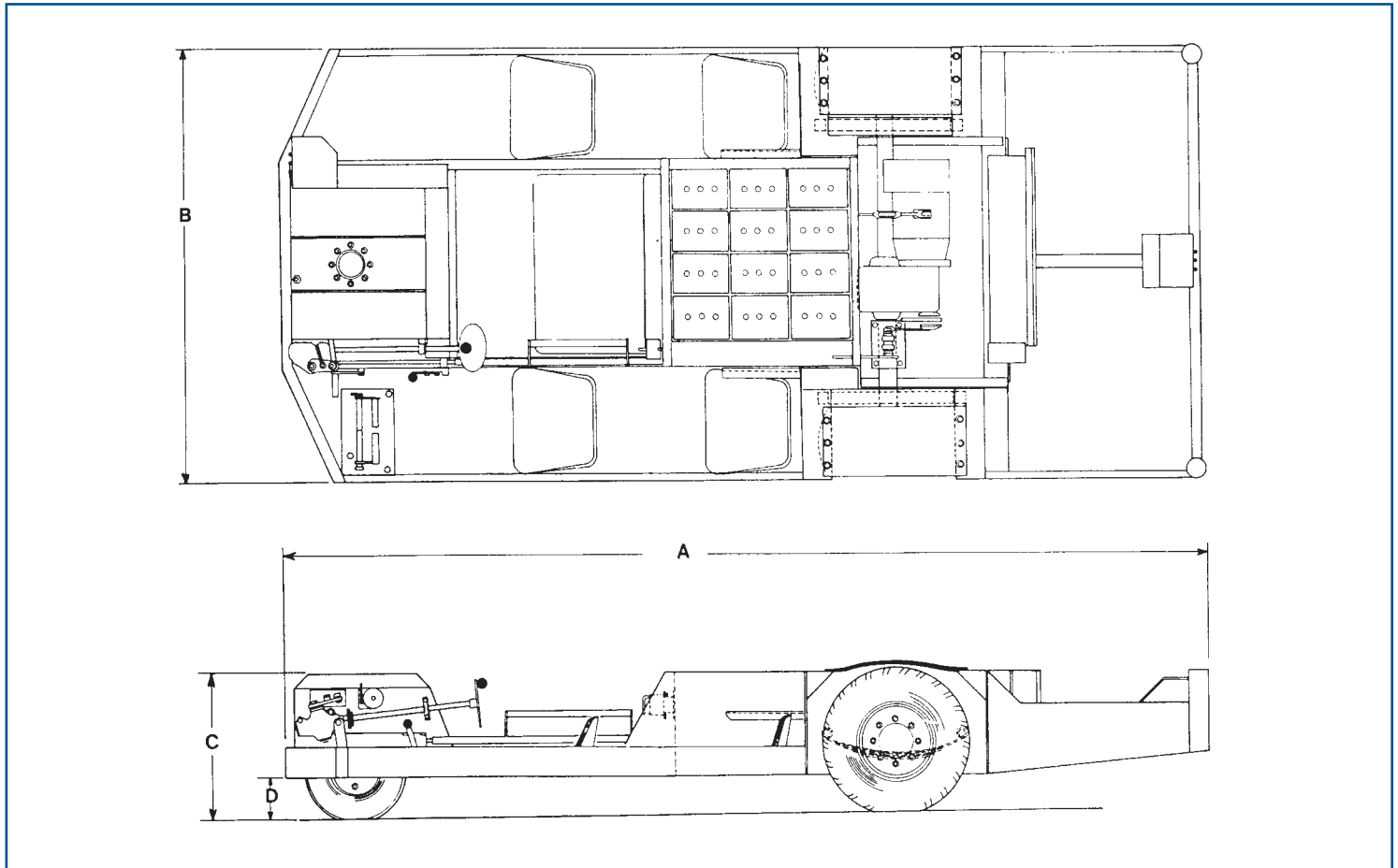
MODEL 372 MANTRIP VEHICLE incorporates the following power and performance features:

- 10 HP MSHA XP traction motor
- 72 volt battery
- 6½" mile/hr speed
- Spring suspension, all wheel; Flexible leaf spring, non-rigid, drive axle suspension for smooth ride
- Special one-piece drive line; Triple reduction transaxle provides single unit connection between motor and drive wheels
- Wheel mountings, 8 bolts on 8' bolt circle, stay tight under high torque traction drive loads
- Simplified motor control uses solid state EV100 control
- 29" max. height over front and rear ends
- Large diameter heavy duty steering compensator reduces steering backlash

*MSHA Approved
Permissible Vehicles*

*JBLCo Provides
Profit Improvement/Cost Reduction*

Model 372 Inspector's Friend™/Mantrip Vehicle Dimensions and Specifications



Mechanical:

A - Length = 13' 8"
 B - Width = 6' 4"
 C - Height = 29"
 D - Ground Clearance = 9¼"
 Weight, CVW = 3,800 lbs.
 Weight, GVW = 5,400 lbs.
 Personnel Capacity = 4
 Max. Load (rear deck) = 700 lbs.
 Tire (front) = 6 x 9, 8 Ply, cleated
 Tire (rear) = 26 x 12-12, 8 Ply, cleated
 Suspension (front) = Coil Springs & Shock Absorbers
 Suspension (rear) = Leaf Springs
 Speeds = 0-6.5 MPH
 Steering = Heavy duty, automotive, recirculating ball type sector with compensator

Electrical:

Motor: 10 HP, 72 VDC, Series traction type MSHA XP-TENV
 Starter: 72 V, EV100, self-diagnostic
 Batteries: High density, electric vehicle EV type, 72V, (12, 6V), 235 AH integrally mounted
 Lights: Dual Bulb 50 W, Quartz Halogen, front & rear
 Charger: Mac Charger supplied with vehicle, 480/575 VAC or 240/480 VAC, single phase input, control timer

Options:

Charging Receptacle: J & R or Anderson
 Seats/Laydown Pads: 1, 2, 4
 Mac Charger: 480/575 volt, 120/240 volt, 480/575 volt PA
 Fire Protection: Two 10 lb. Ext. or Fire Sup. & 10 lb. Ext
 Transaxle: Standard or Limited Slip